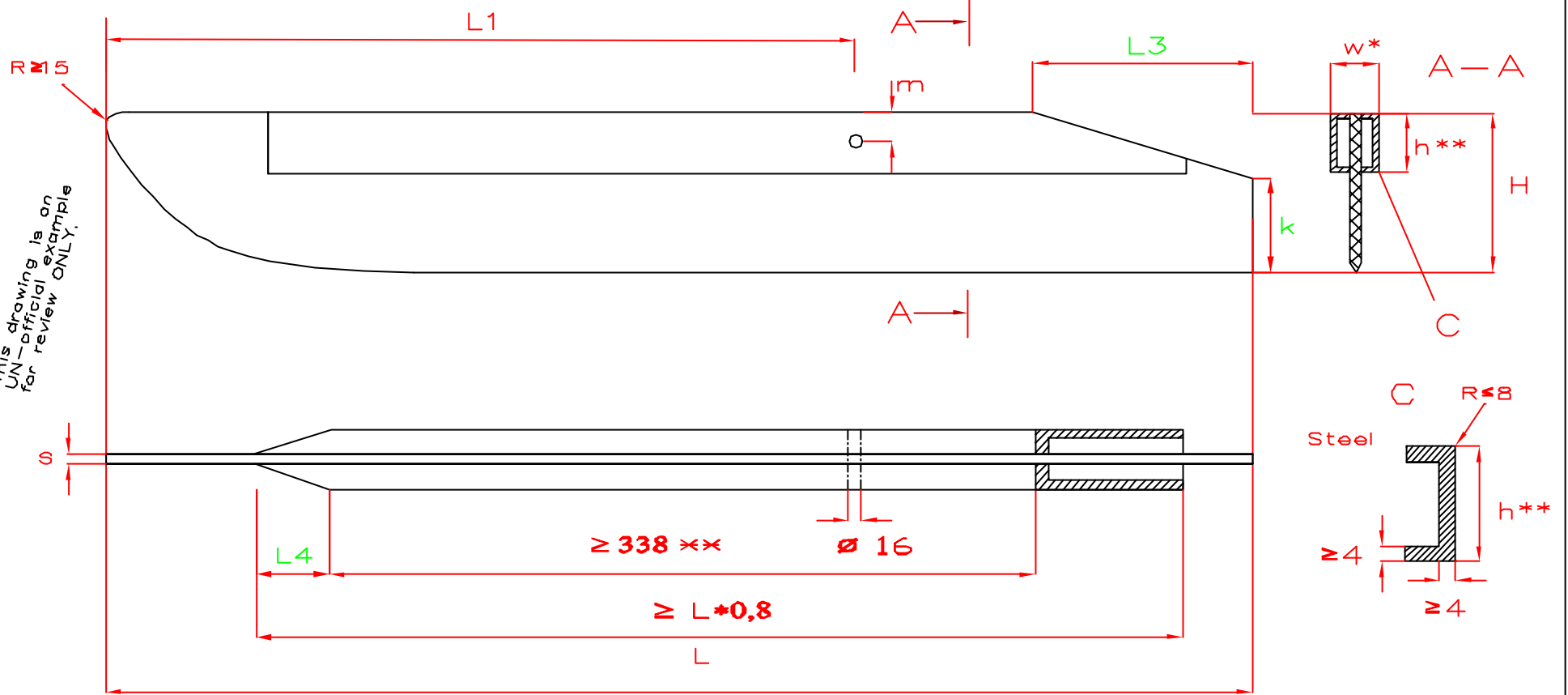
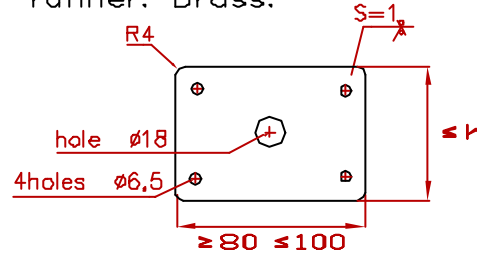


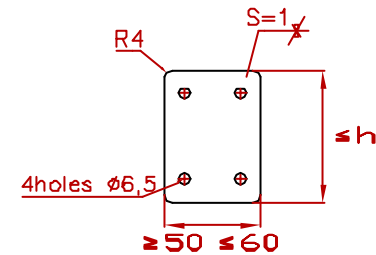
This drawing is an UN-official example for review ONLY.



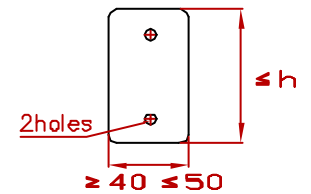
Adjusting plates. Steering runner. Brass.



Adjusting plates. Main runners. Brass.



Alternative shape



All adjusting plate sizes and shapes are recommended

* Including adjusting plates

** see specification 3.5.2

(mm)

Proposal from Ulf T

Runner	L		H		w *		L1		m		s		h**		k		L3		L4		Steelplate runners Monotype-XV
	Min	Max	Min	Max	Min	Max	Min	Max	Min	Max	Min	Max	Min	Max	Min	Max	Min	Max	Min	Max	
Main	1130	1250	165	175	47	49	755	785	28	32	9	11	60	66	80	H	0	200	50	100	International Monotype-XV Ice Yacht Racing Association
Steering	810	910	140	175	47	49	525	555	28	32	9	11	60	66	70	H	0	150	50	100	Drawing by Ulf Torberger. Version 0.6 Valid from 2000-xx-yy