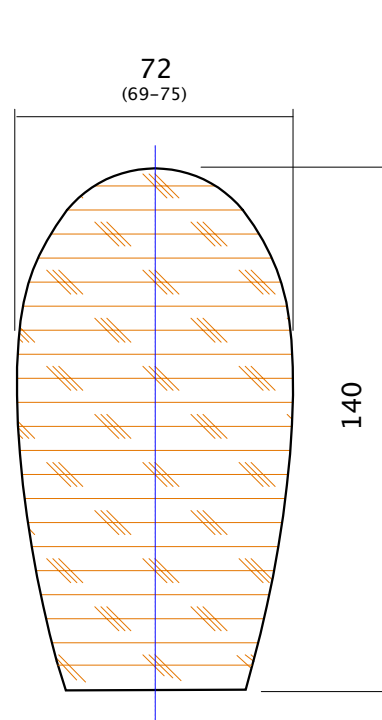
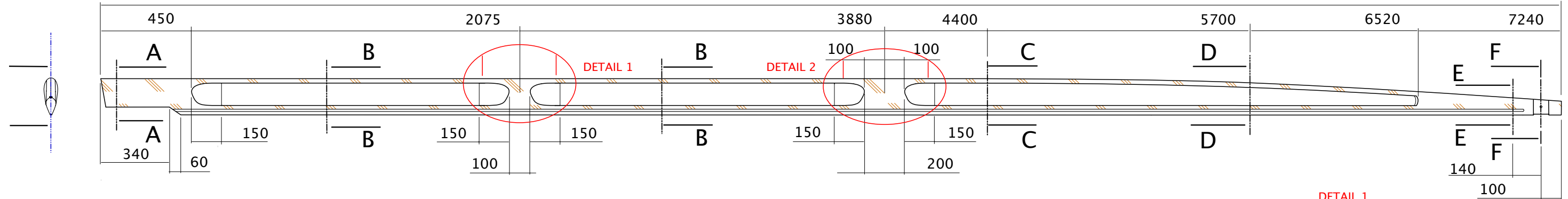
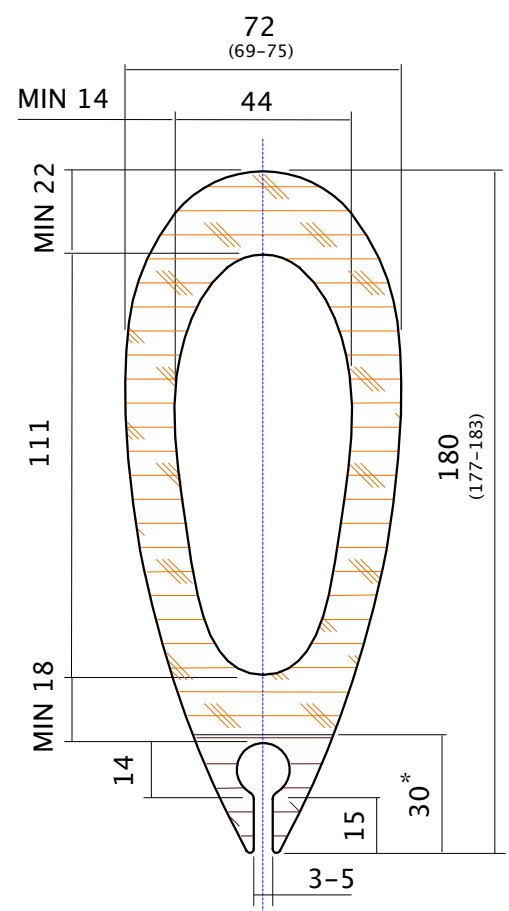


SCALE 1:20

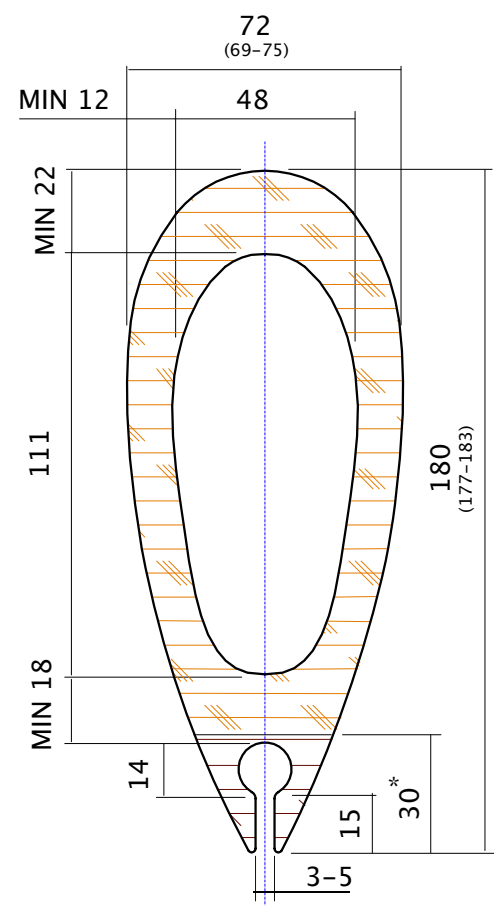
7240
(7230-7250)



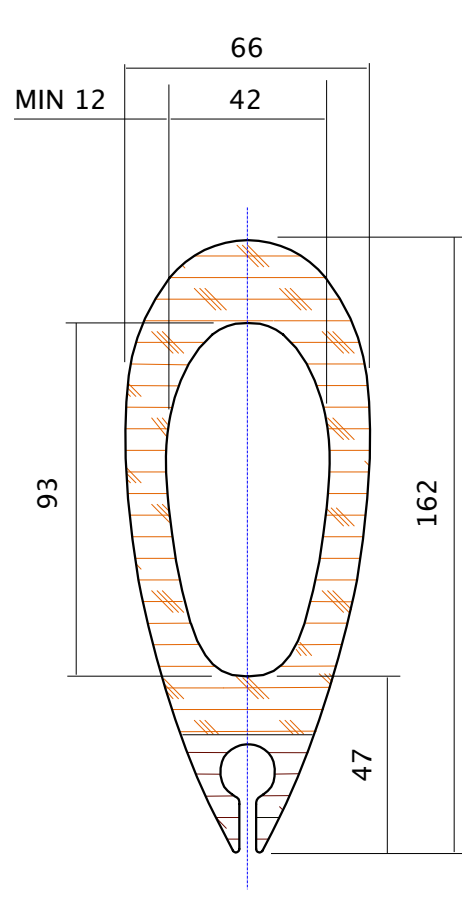
SECTION A-A
SCALE 1:2



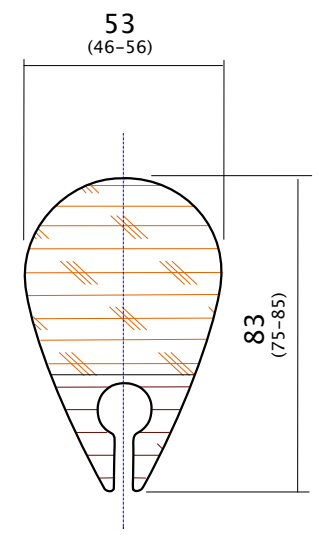
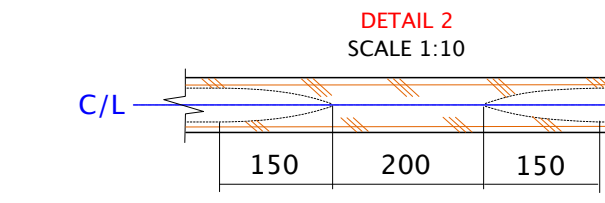
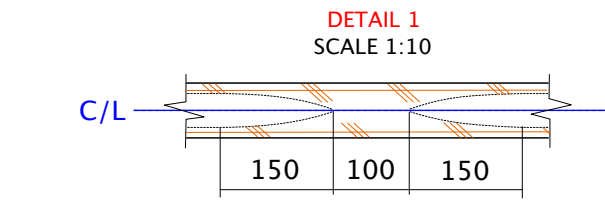
SECTION B-B
SCALE 1:2



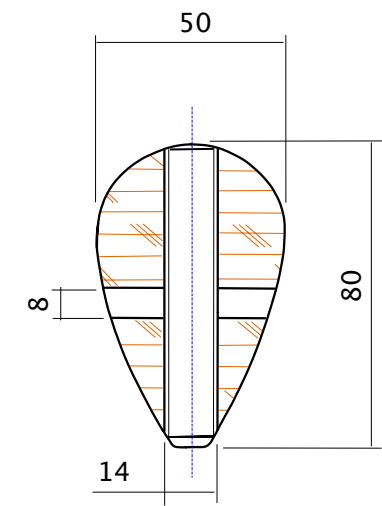
SECTION C-C
TAPER STARTING
POINT
SCALE 1:2



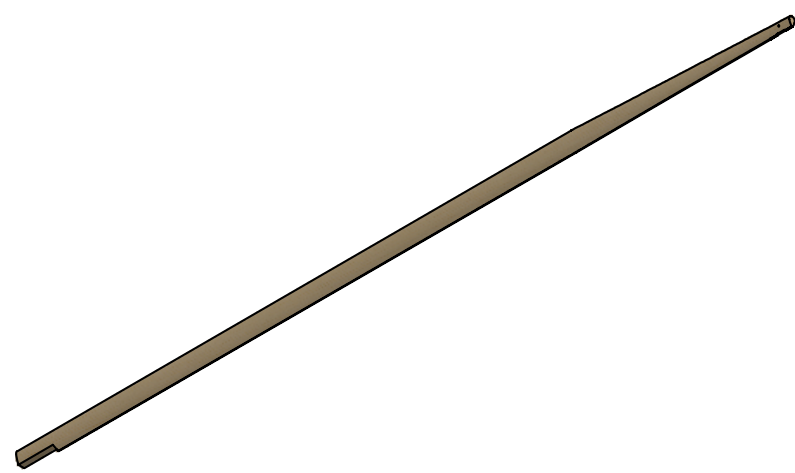
SECTION D-D
RECOMMENDED
PROFILE
SCALE 1:2



SECTION E-E
SAIL MARK
7000 MM
SCALE 1:2



SECTION F-F
SCALE 1:2



ALL DIMENSIONS IN MM

DO NOT SCALE DRAWING

REVISION: 04

	NAME	SIGNATURE	DATE
DRAWN	J. KINBERG	<i>J. Kinberg</i>	2017-12-27
CHK'D	D. SCHUTTE		
CHK'D	A. PADU		
APPV'D	B. ROST		
MFG			
Q.A			

NOTES:
THE DRAWING SHOWS THE MAST IN FULL LENGTH. THE MAST HEEL NEEDS TO BE CUT THE SAME AMOUNT AS YOUR MAST HEEL FITTING BUILDS, INCLUDING THE LENGTH OF THE CUP, TO STAY WITHIN THE TOTAL LENGTH.
SAILMARK, SECTION E-E, AT 7000 MM, INKL. MAST HEEL FITTING.
MATERIAL:
CONIFER, (SPRUCE)
* LUFFGROVE MATERIAL IS OPTIONAL 30 MM FROM THE AFT END. LUFFGROVE MAY BE TAPED WITH MAX 40 MM FIBERGLASS

OWNER: IMXVIYRA	
TITLE: MONOTYPE-XV MAST	
DWG: MAST_A3	A3
SCALE: 1:20, 1:10, 1:2 SHEET: 1 OF 1	